

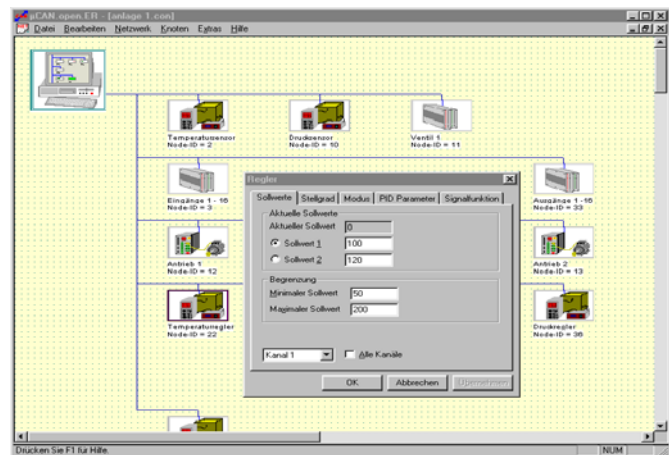
Configuration software CANopen

µCAN.open.ER

Universal CANopen Configuration software for any unit profiles

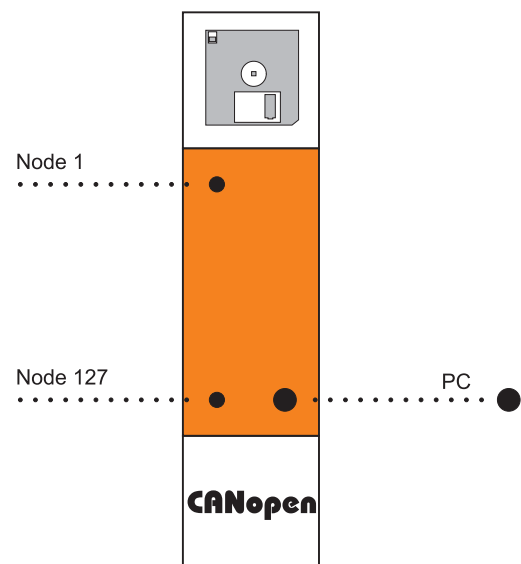
You are using devices with a CANopen-interface or plan a CANopen network? Don't search any longer in the table of the device profiles after the index to a parameter but configure your devices in clear language!

It is possible with the µCAN.open.ER to quickly and efficiently start up a complete CANopen-network even without previous knowledge about the CANopen protocol.



Features

- dialogues customised to the devices
- context-sensitive menus
- network management is supported
- automated search and analysis of the Bus members
- sending and receiving of custom SDO-messages, for instance for debugging purposes
- communication errors within SDO.messages are protocolled and displayed in clear text
- support of the file formats EDS and DCF



Technical Data	CANopen Cconfiguration tool μCAN.open.ER
Supported Profiles	<p>communication profile (CiA 301) digital and analogue I/O modules (CiA 401) incentives (CiA 402) sensors and controller (CiA 404)</p> <p>for all other profiles the objects can in form any list personated and modified</p>
Functions	<p>alignment of PDO mappings support the max. numbers of CANopen Slaves automatic boot-manager</p>
File Format	<p>Electronic Data Sheet (EDS) Device Configuration File (DCF) complete network</p>
Supported Bitrate	<p>10 kBit/sec... 1MBit/sec accordant of CiA reference</p>
CAN Cards	<p>μCAN.pc.PCMCIA, μCAN.pc.DONGLE, μCAN.pc.USB</p>
System Requirements	<p>PC ex 80486 compatible processor, 20 MByte free hard disk space, at least 256 MByte free RAM</p>
Operating Systems	<p>Windows Vista / Windows 7 / Windows 8</p>
Order Number	Description
20.10.008	<p>μCAN.open.ER configuration tool for 127 CAN-nodes, copy protection through USB.</p>